



PROJECT FACTS

Address: 4-6 rue Jean Marcuic, 69009 Lyon, France. Client: I-Vent Completion: 2008. Gross floor area: 6,500 m². Area of largest hall: 70 m². Number of small/large conference rooms: 1/2. Restaurants: 1. Context: entertainment facilities, retail area, spa center. Parking: 1,800 m² parking. Number/size of administration offices: 8/400 m². Setting: city center.

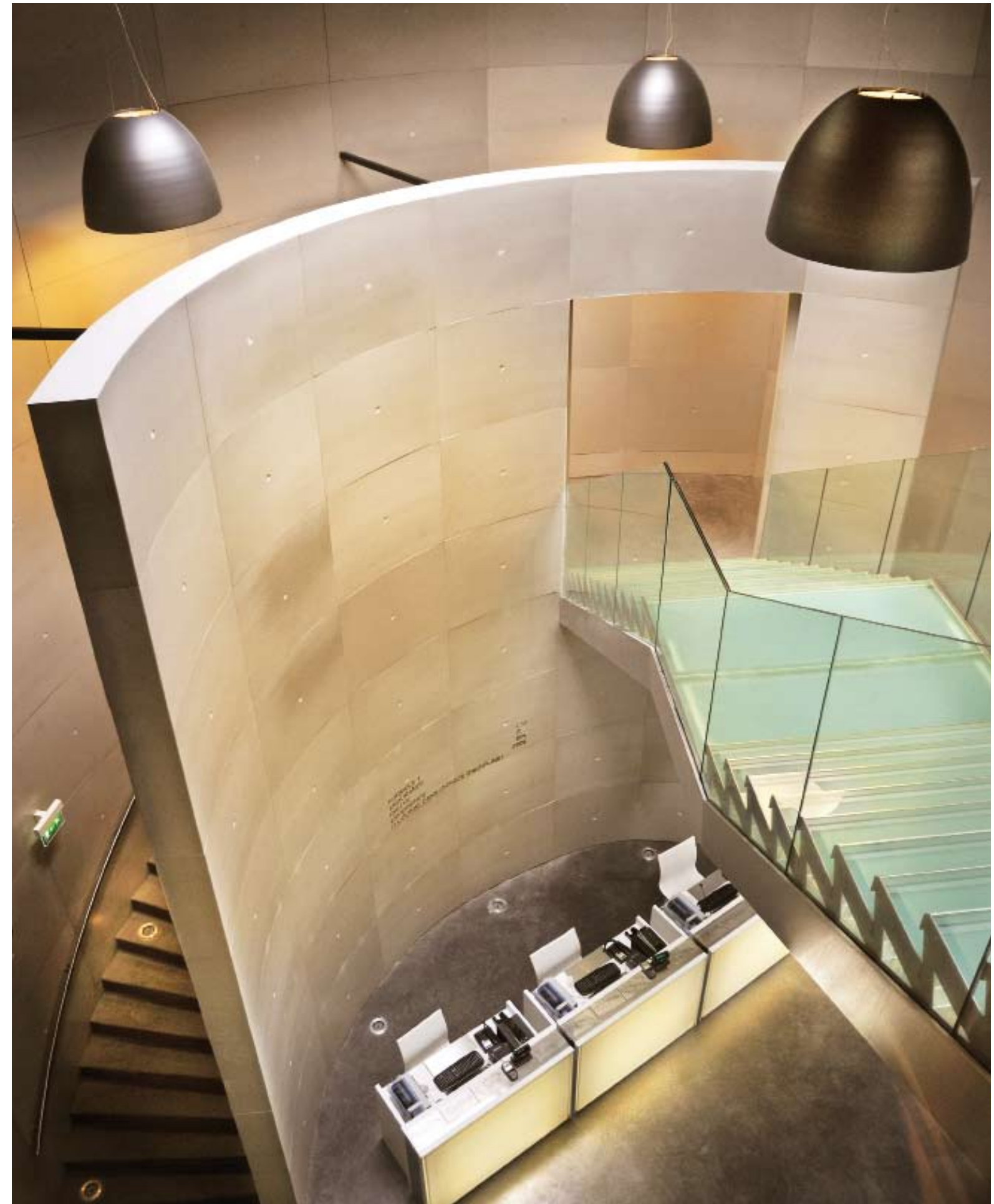


↑ | Façade, at night
→ | Reception

I-Way

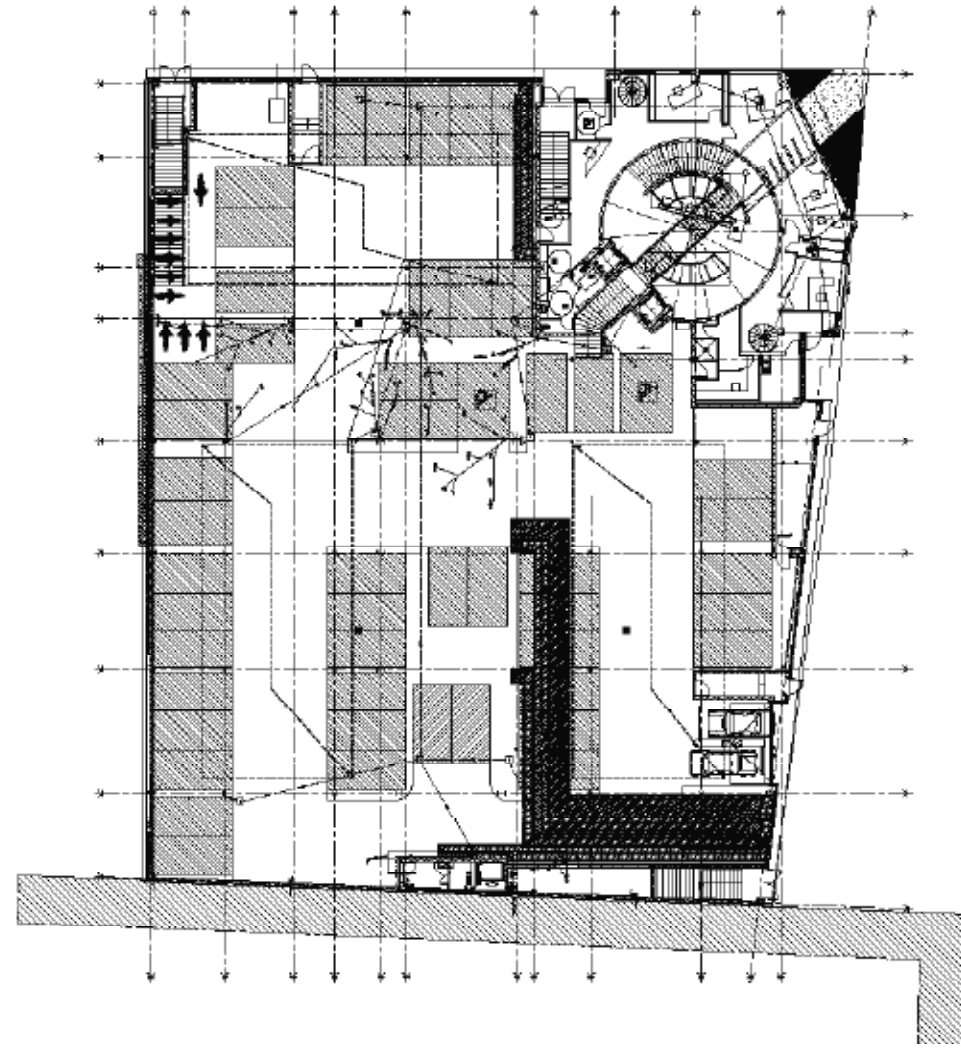
Lyon

Inaugurated in July 2008 in Lyon, I-Way is an international first. This exclusive building is entirely dedicated to automobile simulations. Simulator technology offers six degrees of freedom inspired by the aeronautics industry, providing the public with access to 18 machines. Organized around three simulation zones – Formula 1, Endurance, Rally/Touring – the complex also includes a fitness room, alcohol-free bar, bar/restaurant lounge with terraces, two large conference rooms, meetings rooms and offices. Light sources, whether visible or hidden, are designed to make every space appear radically different.





↑ | Entrance hall
 ↓ | Section



← | Ground floor plan
 ↓ | Formula 1 area

